

Tensione nominale 250Vac, 50-60Hz

Rated voltage 250Vac, 50-60Hz

Taglie da 1 a 20A singola cella e ad 3 a 20A doppia cella.

Size from 1 to 20A single stage and from 3 to 20A double stage

Buona attenuazione di modo comune e differenziale

Good attenuation in the common and differential mode

Bassissima corrente di dispersione verso terra

Very low leakage current

Terminali a morsetto - Screw terminals

Custodia in Noryl (UL94V0) - Noryl case (UL94V0)

Montaggio su guida DIN - DIN rail mounting

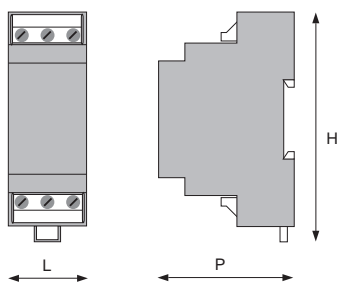
Dimensioni compatte - Compact dimensions

Grado di protezione IP20 - IP20 protection degree



	SIGLA	CODICE	CORRENTE NOMINALE	CORRENTE DI DISPERSIONE		SEZIONE MAX DEI CAVI	CUSTODIA TIPO
	PART NUMBER	CODE	NOMINAL CURRENT (A)	LEAKAGE CURRENT (mA) MIN.	MAX.	MAX. CABLES SECTION (mm ²)	CASE TYPE
SINGOLA CELLA SINGLE CELL	ET/1F-1C/115-250/1/P	7800	1	0.75		2.5	A
	ET/1F-1C/115-250/3/P	7801	3	0.75		2.5	A
	ET/1F-1C/115-250/6/P	7802	6	0.75		2.5	A
	ET/1F-1C/115-250/10/P	7803	10	0.75		2.5	A
	ET/1F-1C/115-250/20/P	7804	20	0.75		2.5	B
	ET/1F-1C/115-250/30/P	7805	30	0.75		2.5	B
DOPPIA CELLA DOUBLE CELL	ET/1F-2C/115-250/3/P	7808	3	0.75		2.5	B
	ET/1F-2C/115-250/6/P	7809	6	0.75		2.5	B
	ET/1F-2C/115-250/10/P	7810	10	0.75		2.5	B
	ET/1F-2C/115-250/20/P	7811	20	0.75		2.5	B

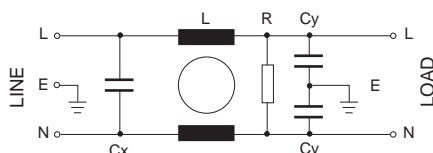
DIMENSIONI (mm) - DIMENSIONS (mm)



CUSTODIA CASE	L mm	P mm	H mm
A	35	57	95
B	52	57	95

SCHEMI DI PRINCIPIO - PRINCIPLE DIAGRAMS

SINGOLA CELLA - SINGLE STAGE



DOPPIA CELLA - DOUBLE STAGE

